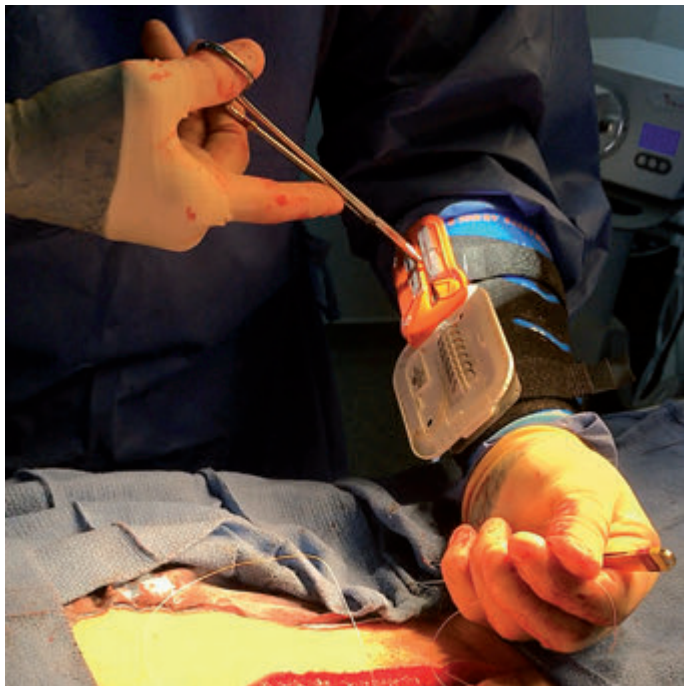


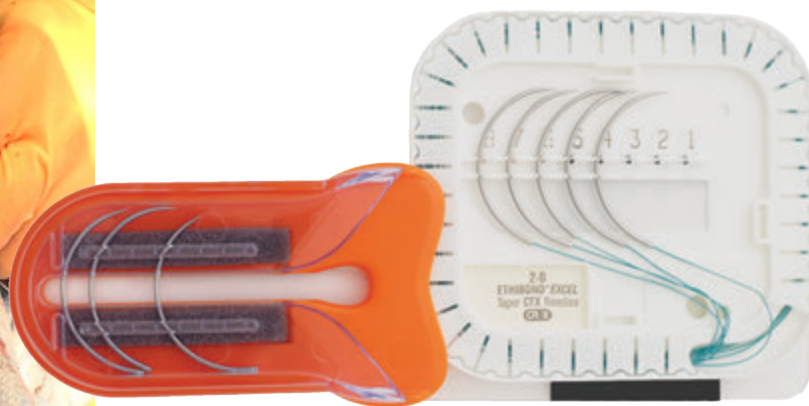
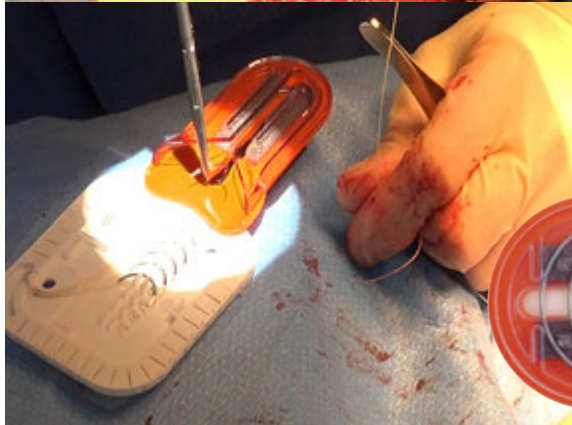
# OPERATIVE ARMOUR<sup>®</sup>

## Suture Needle Management System

- Fast Closure - No more waiting for needles
- Eliminates passage of exposed bloody needles
- Minimizes multi-tasking distractions during counts



Operative Armour is the first safety-engineered device that enables clinicians to close surgical incisions without scrub tech assistance. The clinician can self-dispense and self-secure each suture needle at the point of use. This reduces surgical closure times, eliminates passage and handling of exposed contaminated needles, and reduces the potential for dropped needles or incorrect counts resulting from multi-tasking distractions.



Reimagining  
Surgical  
Closure<sup>™</sup>

  
Sharp Fluidics<sup>®</sup>

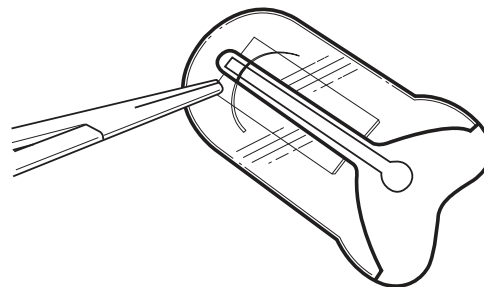
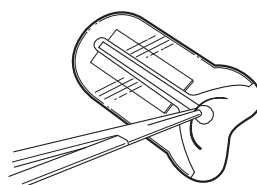
# OPERATIVE ARMOUR®

## Suture Needle Management System



### Large Needle Trap - NT-1

The Large Needle Trap is compatible with any off-the-shelf suture pack and can accommodate up to 16 needles ranging from 27mm-48mm in diameter. The Large Needle Trap can be attached directly to the drape, the forearm Barrier, or any Velcro®-type loop surface. It is packaged with a wrist attachment strap and is available in single unit pouches and 6 unit trays.



### Small Needle Trap - NT-1S

The Dual In-Line Small Needle Trap is compatible with any off-the-shelf suture pack and accommodates needles ranging from 12mm-26mm in diameter. The Small Needle Trap can be attached directly to the drape, the forearm Barrier, or any Velcro®-type loop surface. It is packaged with a wrist attachment strap and is available in single unit pouches and 6 unit trays.



### Large Needle Barrier Kit - OAB-1L

The Large Needle Barrier Kit is optimized for layered closures where both large and small needles are utilized. The Barrier Kit offers significant workflow efficiency benefits for DIEP Flaps, Orthopedic Spine, Laparotomies, and other closures for long open incisions where pop-off sutures are used.

The Kit consists of four Large Needle Traps, two Small Needle Traps, and a forearm Barrier for Needle Trap attachment with a tool scabbard for needle driver/suture scissors.